

A&G MANUFACTURING CO., INC.

YOUR SOURCE FOR QUALITY, SERVICE AND EFFICIENT BUYING.

PHONE 978-587-2859

WWW.AGMFG.NET

1-888-367-8227

TOP BEAM CLAMP

FEATURES

DESIGNED FOR ROOF INSTALLATIONS WITH BAR JOIST TYPE CONSTRUCTION AS WELL AS TO BE ATTACHED MECHANICALLY TO THE TOP OR BOTTOM FLANGE OF STEEL BEAMS. A LOCKING NUT IS PROVIDED AND WHEN PROPERLY TIGHTENED PREVENTS LOOSENING DUE TO VIBRATION. THE FULL BODY TAPPING FEATURE FOR THE ROD ALLOWS FOR EXTRA ADJUSTMENT AFTER INSTALLATION.

APPLICATION

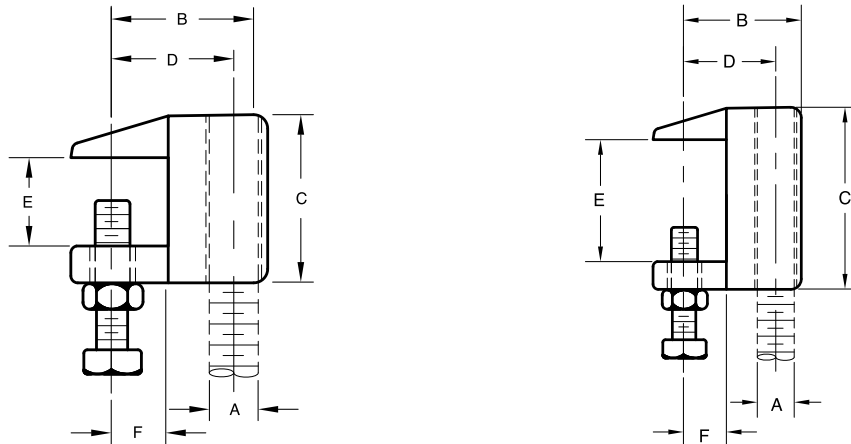
MAXIMUM LOADS ARE BASED UPON FULL THREAD ENGAGEMENT BY THE ROD. WHEN USING A RETAINING STRAP THE MAXIMUM ALLOWABLE FLANGE THICKNESS IS REDUCED BY 1/8".

STANDARD MATERIAL

MALLEABLE IRON WITH HARDENED STEEL CUP POINT SET SCREW COMPLIANCE: FEDERAL SPECIFICATION A-A-1192A (TYPE 19 & 23), ANSI/MSS SP-58 (TYPE 19 & 23)

STANDARD FINISH

PLAIN, ELECTRO-GALVANIZED



PART #	UPC#	DESCRIPTION	MAX LOAD	A	B	C	D	E	F	WEIGHT EACH	SHIP CASE
352-EG	00800	3/4" Flange Electro Zinc	250 lbs.	1/4"-20	1-5/8	1-1/2	1	15/16	1/2	.29	100
353	00353	3/4" Flange Plain Black	400 lbs.	3/8"-16	1-5/8	1-1/2	1	3/4	1/2	.33	50
353-EG	12353	3/4" Flange Electro Zinc	400 lbs.	3/8"-16	1-5/8	1-1/2	1	3/4	1/2	.33	50
354	00354	1-1/4" Flange Plain Black	400 lbs.	3/8"-16	1-5/8	1-7/8	1-1/6	1-1/4	1/2	.37	50
354-EG	12354	1-1/4" Flange Electro Zinc	400 lbs.	3/8"-16	1-5/8	1-7/8	1-1/6	1-1/4	1/2	.37	50
360	00360	3/4" Flange Plain Black	500 lbs.	1/2"-13	1-11/16	1-1/2	1	3/4	1/2	.34	50
360-EG	12360	3/4" Flange Electro Zinc	500 lbs.	1/2"-13	1-11/16	1-1/2	1	3/4	1/2	.34	50
361	00361	1-1/4" Flange Plain Black	500 lbs.	1/2"-13	1-5/8	1-7/8	1-1/6	1-1/4	1/2	.35	50
361-EG	12361	1-1/4" Flange Electro Zinc	500 lbs.	1/2"-13	1-5/8	1-7/8	1-1/6	1-1/4	1/2	.35	50

978-587-2859

WWW.AGMFG.NET

1-888-367-8227